



GoE Stratagem

Technical White Paper

Gridlock System Architecture

Version 1.0

April 20, 2026

A SaaS-focused overview of the Gridlock deployment, activation, onboarding, and verification framework.

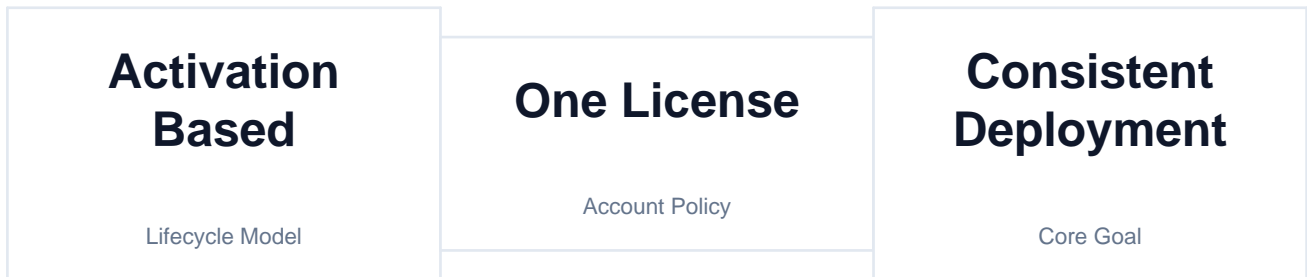
Executive Summary

GoE Stratagem is a structured trading software system designed to standardize automated strategy deployment through license validation, guided onboarding, broker compatibility filtering, and activation-based lifecycle control. The objective is to improve deployment consistency and setup accuracy while maintaining full user responsibility over trading decisions.

The platform approach is operational rather than advisory. It focuses on how the product is activated, configured, and matched to a user's environment so that onboarding and setup can be more consistent across accounts, brokers, and platform conditions.

SYSTEM COMPONENTS

- EA (Gridlock)
- License API
- Onboarding Engine
- Broker Matching



Problem Statement

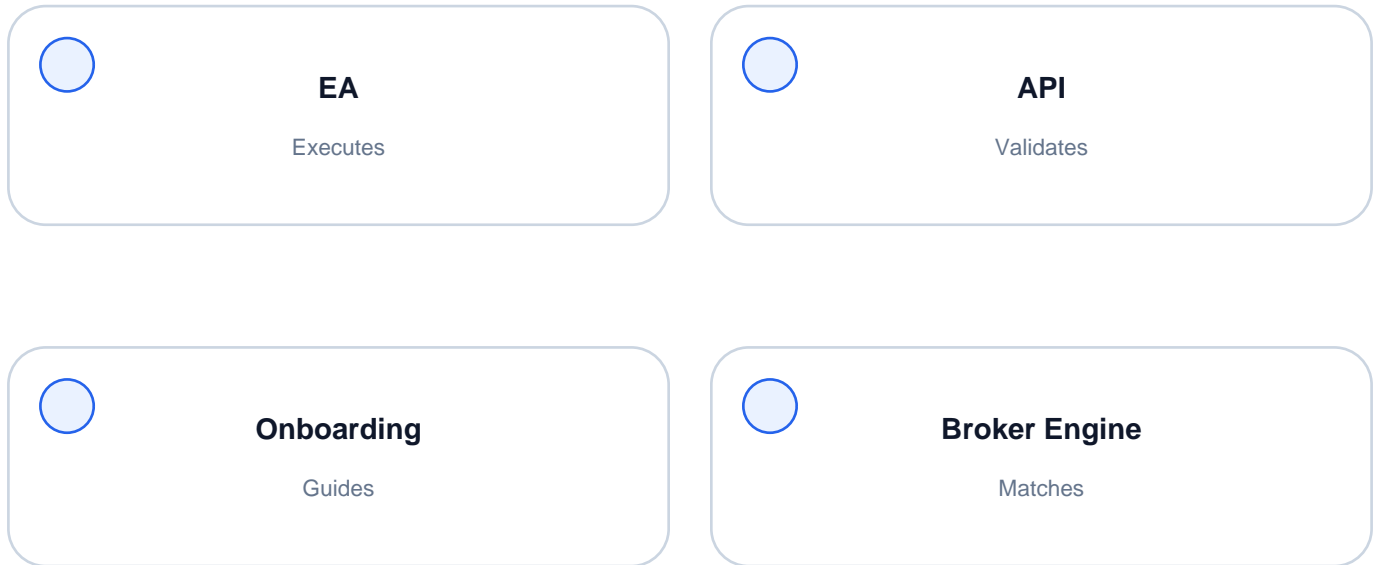
Retail trading environments are fragmented. The most common operational issues appear before strategy logic is ever allowed to run consistently.

Common Inputs	Observed Consequences
<ul style="list-style-type: none">■ Misconfigured MT4/MT5 setups■ Broker incompatibility■ No structured onboarding■ License abuse	<ul style="list-style-type: none">➔■ Inconsistent execution➔■ Higher operational risk➔■ Avoidable losses➔■ Poor user outcomes

The system is intended to reduce setup friction and standardize the path from purchase to activation. It is not intended to eliminate trading risk or guarantee performance.

System Overview

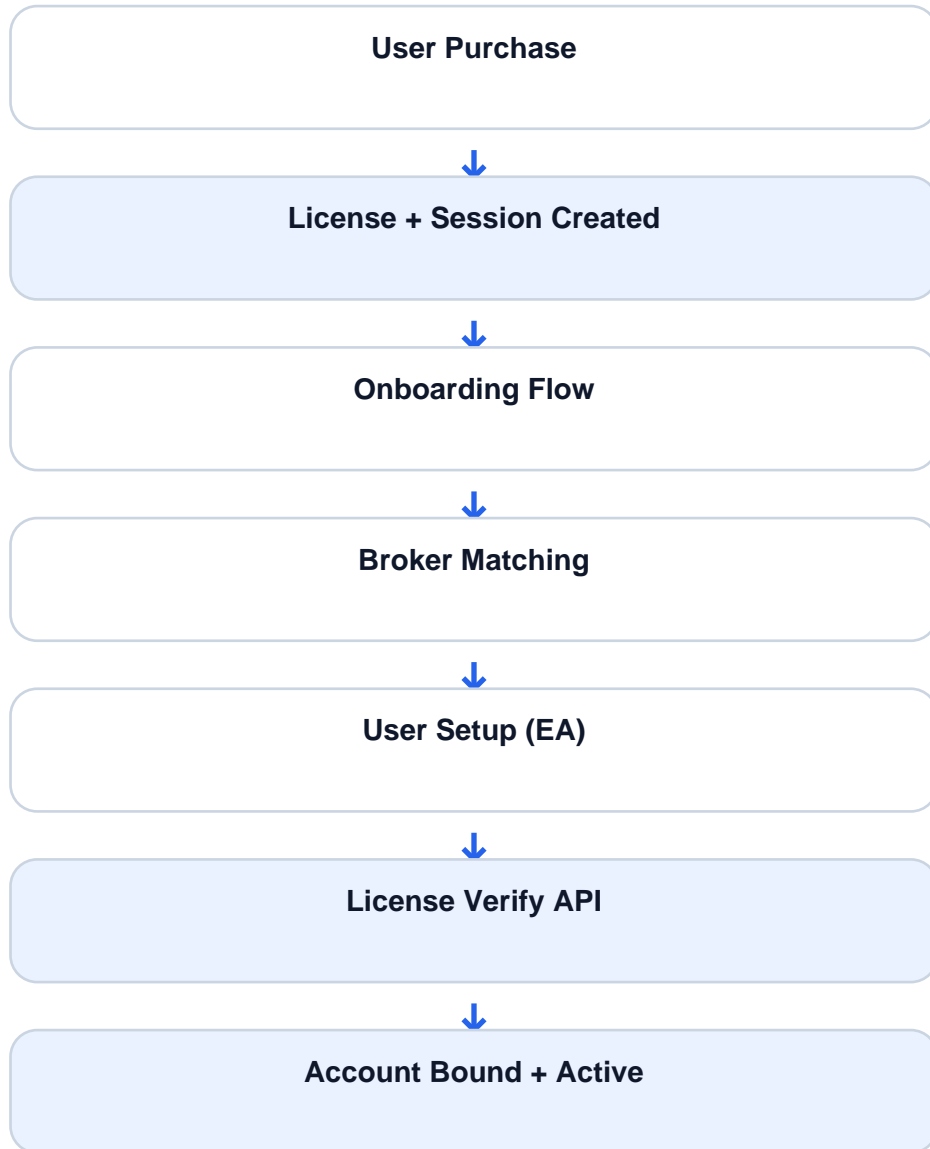
The Gridlock system is built as a set of connected operational components. Each component addresses a different part of user deployment, validation, and configuration.



Component	Primary Function
Gridlock EA	Executes the installed strategy logic on the user's platform
License API	Validates license state and returns activation status
Onboarding System	Collects configuration inputs and guides setup
Broker Engine	Filters compatibility based on user and broker attributes
CMS Database	Stores account state, session state, and lifecycle records

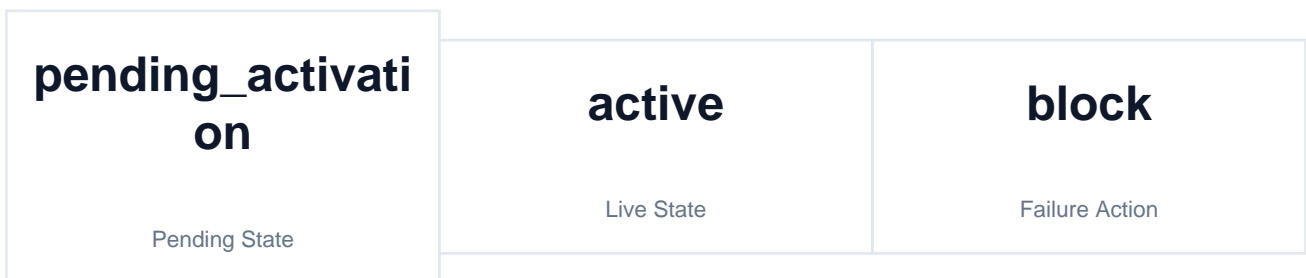
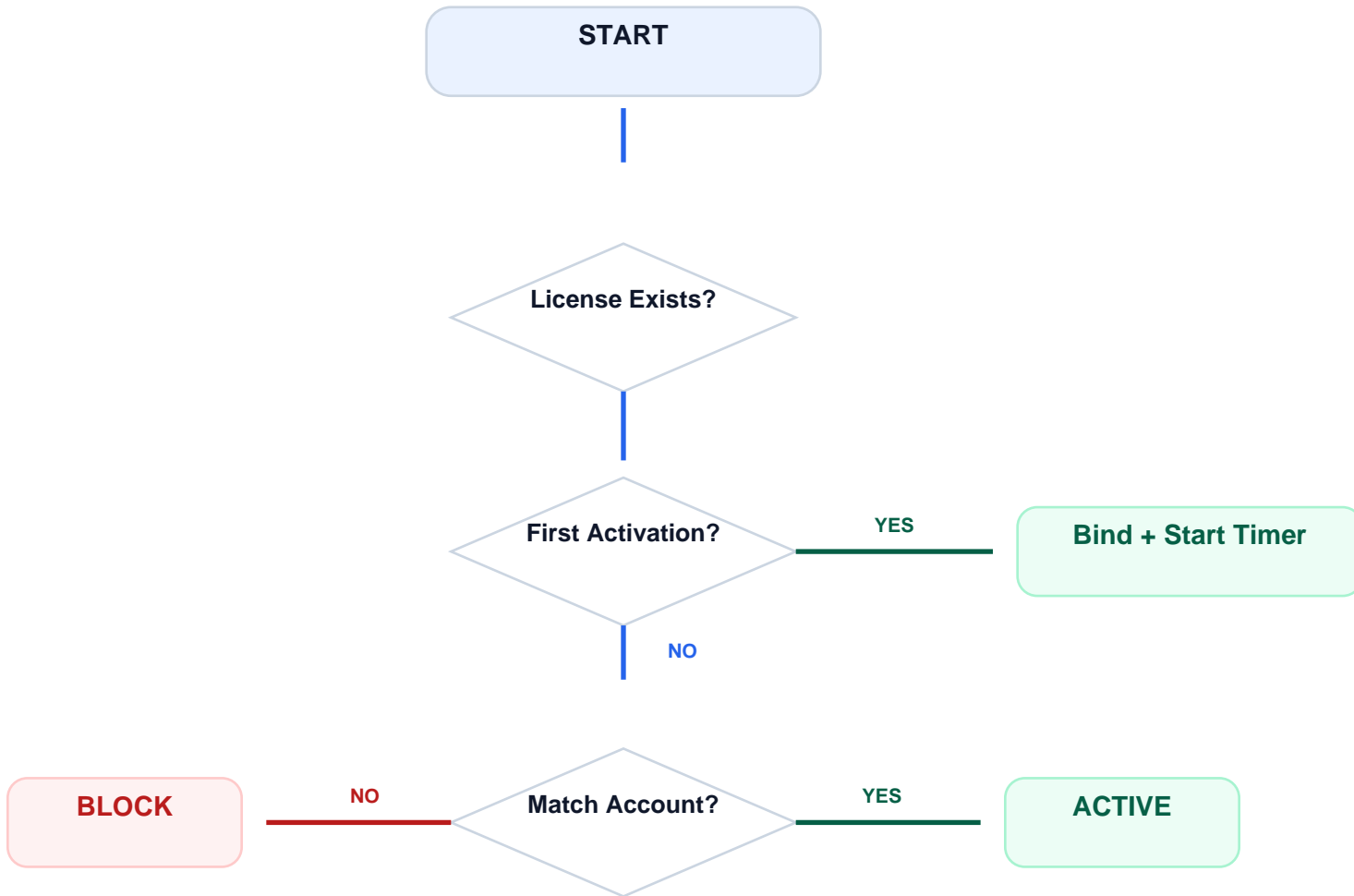
System Architecture

The operational flow below summarizes the intended deployment sequence from purchase through account activation.



License Flow

Activation is designed around account binding and state transitions. The first activation establishes the relationship between the license, account, and server context.



API Design

The validation layer is intentionally narrow. A simple verification endpoint allows the EA or related services to check license state and expiry information.

```
GET /_functions/license_verify
```

```
{  
  "status": "ACTIVE",  
  "expiry": "ISO_TIMESTAMP"  
}
```

A response contract like this supports lightweight validation checks while keeping the licensing interface simple to maintain and extend.

Onboarding System

The onboarding process collects a limited set of user inputs and returns a narrower deployment path. The purpose is guidance and setup structure, not trading advice.

Step 1 → Country	User input collected
Step 2 → Platform	User input collected
Step 3 → Instrument	User input collected
Step 4 → Demo / Live	User input collected
Step 5 → Budget	User input collected
→ Broker Recommendation	Structured output

Broker Matching Logic

Compatibility scoring can be expressed as a simple weighted formula. This keeps the logic readable and easier to tune over time.

$$\begin{aligned} \text{Score} = & \\ & \text{Priority} \\ & + \text{Country Match} \\ & + \text{Platform Match} \\ & + \text{Instrument Match} \\ & + \text{Demo Support} \\ & + \text{Deposit Fit} \end{aligned}$$

This scoring model is useful because it separates fixed priority from user-dependent fit variables. As broker coverage expands, additional weights can be introduced without changing the overall structure.

Security Model

Security is centered on license integrity, account binding, and anti-sharing controls intended to reduce unauthorized reuse.

■ License Protection	■ Abuse Prevention
<ul style="list-style-type: none">• Secret headers• Account binding• Server validation	<ul style="list-style-type: none">• No sharing• No multi-account reuse• Enforcement controls

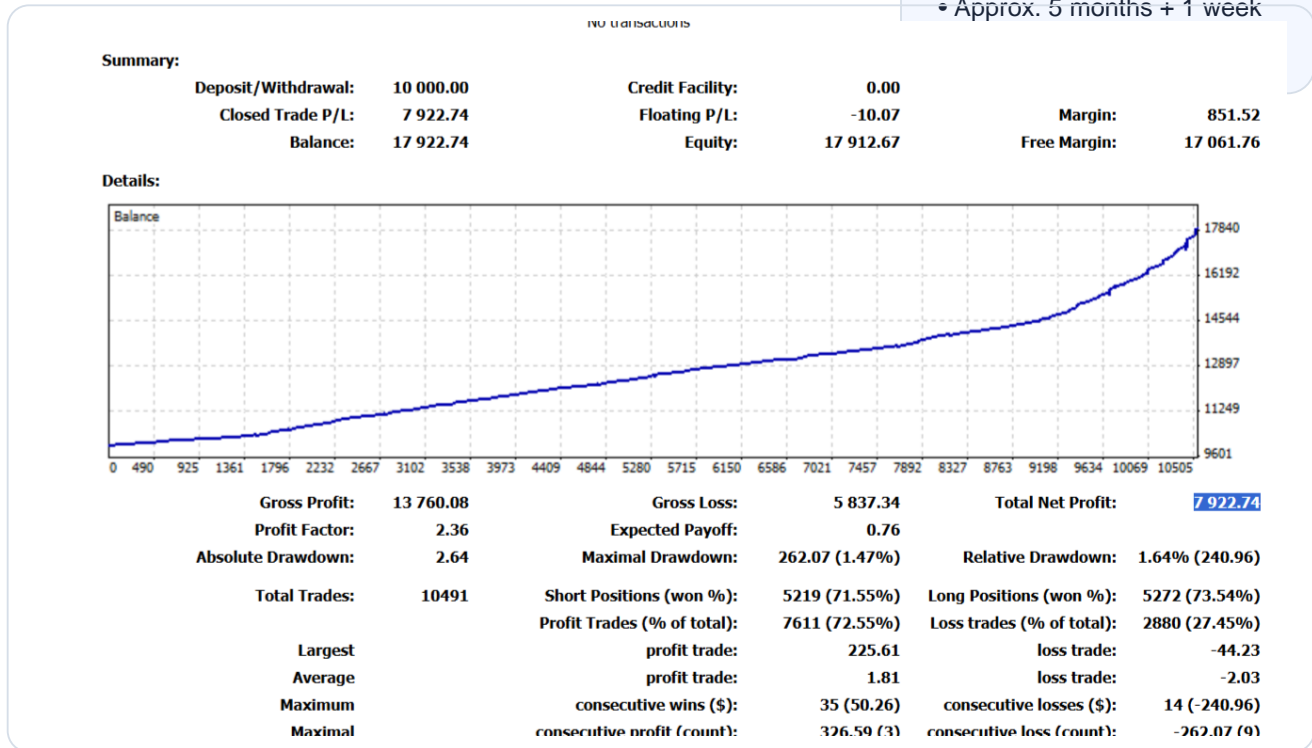
These controls are operational safeguards. They support the SaaS licensing model, but they do not replace broker-side security, platform permissions, or user-side credential protection.

Performance Analysis

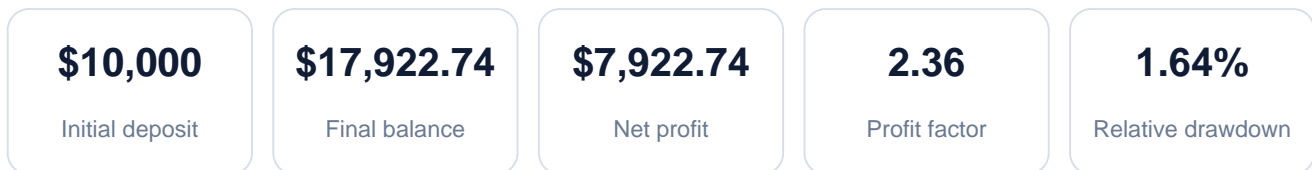
The chart below summarizes a consecutive backtest run covering approximately 5 months and 1 week across three major FX pairs: USD/JPY, AUD/USD, and EUR/USD as system test data under stated conditions, not as a promise of future performance.

Backtest scope

- 3 major FX pairs
- Approx. 5 months + 1 week



Backtest statement image provided by the user, showing steady balance growth across the reported test period.



Observed characteristics

- Steady upward balance curve over the reported run.
- Broad trade count across three liquid major FX

Interpretation

- The dataset suggests a consistency-oriented execution profile rather than isolated outsized gains.

Performance positioning statement

The Gridlock system demonstrates strong statistical consistency and controlled drawdown characteristics under test conditions. Actual performance will vary based on market conditions, broker execution, and user configuration. Past performance is not indicative of future results.

System Limitations

The system remains dependent on the stability of external infrastructure and market conditions. These dependencies can affect onboarding, activation, validation, and execution quality.

External Dependencies

- Broker execution
- Market conditions
- VPS / internet
- MetaTrader stability

Accordingly, even a well-structured deployment framework cannot ensure uninterrupted availability, identical execution, or consistent real-world performance across environments.

Risk Disclosure

■ ■ Important

Trading involves risk.
Capital loss is possible.
No guarantees are made.
The user remains responsible for trading decisions, account configuration, and live deployment choices.

This document describes software structure and deployment workflow. It does not provide investment advice, portfolio management, or a recommendation to buy or sell any instrument.

Product Roadmap

The roadmap below reflects currently discussed expansion areas for the SaaS system surrounding Gridlock.



Future priorities may include analytics surfaces, broader broker coverage, more flexible licensing controls, and additional cloud-connected tools that support deployment management.

Legal Framework

Use of the system is intended to be governed by a defined document set so that operational expectations and risk boundaries are communicated clearly.

Governed by

- Terms & Conditions
- Privacy Policy
- Refund Policy
- Risk Disclaimer

Those documents should be kept aligned with the licensing model, onboarding flow, and user communications presented across the product.

Conclusion

GoE Stratagem improves deployment consistency — not trading outcomes.

In practical terms, the system is designed to make activation, onboarding, broker fit, and account binding more standardized. The value proposition is operational consistency, cleaner setup flow, and stronger lifecycle control inside a SaaS framework.

